



A guide for the amenity sector

Managing weeds, pests and diseases while looking after people, water and wildlife



dwrcymru.com/watersource



Cronfa Amaethyddol Ewrop ar
gyfer Datblygu Gwledig
Ewrop yn Buddsoddi mewn Ardaloedd Gwledig
European Agricultural Fund for
Rural Development
Europe Investing in Rural Areas



Llywodraeth Cymru
Welsh Government



WaterSource

Our Catchment Management Approach

We're looking after the land around our rivers, reservoirs and groundwater to protect our drinking water for now and for years to come.

This means we can use fewer chemicals and less energy to treat drinking water. This is good news for our customers and our beautiful environment.

Everyone can play their part.

PestSmart is our latest WaterSource campaign. 'Pesticide' is a collective term for substances used to control weeds, pests and diseases. These are also known as Plant Protection Products.

Routine monitoring of rivers and reservoirs that supply drinking water has shown an increase in detections of pesticides within the last few years. While levels are too low to pose a risk to those drinking the water, they are sufficient to breach rigorous EU Drinking Water Standards. These standards require the cumulative level of all pesticides to remain below one tenth of part per billion, the equivalent of one baked bean in 24 million tins.

We're working together with all user groups, including the amenity sector to encourage "smarter" techniques to reduce the impact of pesticides on people, water and wildlife.



This booklet has been produced with input from our PestSmart partners from across the amenity sector.



We know that pesticides can play an essential and everyday role for amenity professionals.

Although highly regulated, there is still a risk pesticides can affect people, water and wildlife if they are stored, used or disposed of incorrectly.



Some things to think about

Before you start work, establish if you have a weed, pest or disease problem.

If the problem is worth tackling consider using this staged approach.

1

What's the problem?

To get longer term results you should first understand the underlying causes of problem weeds, pests and diseases.

For example:

- Learn to identify early stages of key weeds, pests and diseases.
- Get advice from a suitably qualified adviser.

2

Can you avoid the problem?

Know what to do to help prevent infestations.

For example:

- Repair and maintain pathways to avoid weed establishment.
- Alter mowing regimes as they could be encouraging weed growth.

3

Are there non-chemical methods?

Non-chemical control methods often provide good control.

For example:

- Mowing or cutting weeds.
- Mechanical weed brushing/sweeping.
- Hot water or foam.
- Cultivation.

4

Is the use of chemicals appropriate?

Prioritise targeted application methods using the right chemical at the right time.

For example:

- Stem injection.
- Weed wiping.
- Spot spraying.

5

Did it work?

Record and measure results to evaluate success and refine your approach. This can increase your efficiency, saving you time and money.

For example:

- Compare records from previous years.
- Take before and after photos.
- Talk to an adviser about future strategies.



STORE SMART

REMEMBER

Only buy what you need

Your store must be:

- clearly marked
- lockable
- bunded
- away from any watercourses or drains

Store all application equipment under cover. Check your equipment:

- is working correctly
- has necessary certificates

Whilst filling equipment **NEVER:**

- leave equipment unattended
- leave the hose submerged in water

Ensure the operators:

- are certificated
- are competent
- have correct PPE

Keep pesticides:

- in original containers
- clearly labelled

Fill equipment in a covered, concrete bunded area using a:

- standpipe or tap that incorporates a double check valve
- separate bowser or storage tank

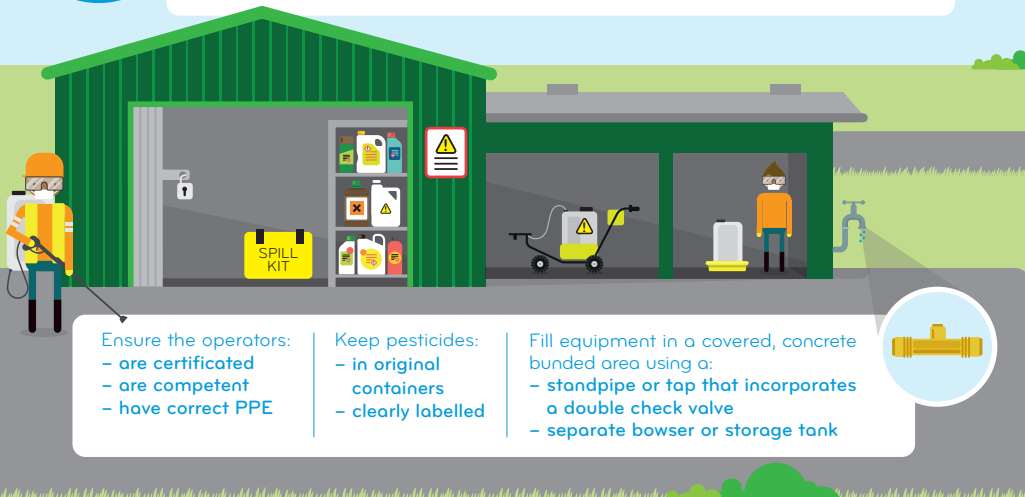
DISPOSE SMART

RECORD
all applications and disposals

Use a registered waste disposal company when disposing of:

- unused pesticides
- empty containers
- used PPE

Follow disposal guidance on the product label



TRANSPORT SMART

NEVER
carry pesticides in the cab

Transport pesticides in a temporary store that is:

- bunded
- weather and fireproof
- clearly marked
- locked

USE SMART

ALWAYS
follow guidance on the product label

Fill equipment **AWAY** from drains or watercourses. Only fill equipment from a:

- separate bowser or storage tank
- standpipe or tap incorporating a double check valve

Check weather forecast before, during and after work. **Only apply in appropriate conditions**

Plan your route
To avoid pollution, do not cross any drains, ditches or streams

Do not over apply pesticides
Run off can impact watercourses and waste time and money

Consider using targeted application methods e.g. stem-injection, weed wiper, spot sprayer etc.

Establish unsprayed buffer strips adjacent to ditches, drains and watercourses

REMEMBER:

If a pesticide has entered a watercourse or drain, report it to Natural Resources Wales on **0300 065 3000**





Invasive non-native species (INNS):

INNS are difficult to control and are likely to be found next to, or in watercourses. In addition to the best practice outlined on previous pages, you should ensure:

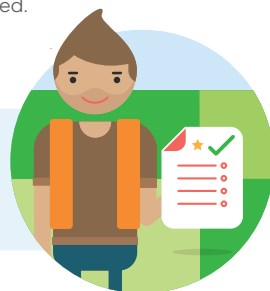
- You have the correct licenses/permissions to operate near water or on a protected site. You may need an agreement with Natural Resources Wales (NRW) or the Environment Agency.
- You are using a targeted application method e.g. stem injection.
- The product you are using is appropriate for your working environment e.g. approved for aquatic use if near or in water.

REMEMBER: IF CONTRACTORS ARE CARRYING OUT ACTIVITIES ON YOUR BEHALF, YOU ARE BOTH RESPONSIBLE FOR MEETING ANY REGULATIONS.

Using Contractors

Using a contractor can take the hassle out of using pesticides, BUT ensure the following first:

- Operators are suitably qualified, competent and operate to the highest professional level e.g. The Amenity Standard.
- All equipment is working correctly and has the necessary certificates.
- The planned activity poses no risk to people, water or wildlife.
- It is agreed who is responsible for disposal of leftover pesticide or used containers.
- Accurate spray records are promptly supplied.



For more information and advice:

Publications

- **Best Practice Guidance – The “10 Golden Rules”** (Amenity Forum)
- **Guidance on storing pesticides for farmers and other professional users** (HSE)
- **Harmful (injurious) weeds and invasive non-native species** (Welsh Government)

Organisations

- **Amenity Forum**
www.amenityforum.co.uk
- **Health and Safety Executive (HSE)**
www.hse.gov.uk
- **Welsh Government**
www.gov.wales
- **Natural Resources Wales**
www.naturalresources.wales
- **National Sprayer Testing Scheme**
www.nsts.org.uk