

Planting Notes

1.0 General

- 1.1 All setting out of trees be agreed with the Landscape Architect on site.  
1.2 All current relevant British Standards will apply.  
1.3 Planting will not be undertaken during waterlogged or frost conditions.  
1.4 Appropriate root barriers are to be installed where planting could conflict with underground services.  
1.5 For detailed information on plant specification, refer to schedule UG1969-URB-XX-ZZ-RP-L-90-0001.  
Note: Please refer to Landscape Management Plan UG1969-URB-XX-ZZ-RP-L-90-001-P01

2.0 Soils

- 2.1 All subsoil within shrub planting areas and as a seeding substrate, shall comply with BS8601:2013. Cultivate to alleviate any compaction prior to topsoiling and to ensure suitability for wildflower / grass seeding.  
2.2 All imported topsoil shall comply with BS3882:2015 and shall be approved by the CA.  
Note: Please refer to Soil Re-Use Report for detailed specifications.

3.0 Planting

- 3.1 All plants shall conform to BS3936:1992 and planting operations shall be carried out in accordance with the relevant sections of BS 8545:2014 and BS4428:1989.  
3.2 EHS trees shall be planted in pits with a minimum topsoil volume of 1.7cu. m. Staking shall be as per the plant schedule. Tree pit composition and back fill substrate will allow for adequate drainage (avoid Compaction) and aeration. No fertilizers are to be used unless specified by the Nursery. Top dressing and mulch to be applied in accordance with Tree Pit specification Drawing. .  
3.3 All shrubs shall be planted in beds with a minimum topsoil depth of 300mm. Only include slow release fertilizers if specified by the Nursery..  
3.4 Shrub beds to be planted as indicated on the layout plan with a random, varied mix at 1.5m centres.  
3.5 Wood bark mulch shall be applied to each shrub planting bed and the base of each individual tree in all soft landscaped area. Mulch to be applied to a depth of 75mm.  
3.6 Plant species to be as specified in the plant schedule and approved by CA prior to planting.  
3.7 Native hedge planting: Double-staggered, 450mm centres and 300mm offset, to achieve 5 plants per linear meter.

4.0 Grass/Species rich/Wildflora seeding & Woodland Seed Mix

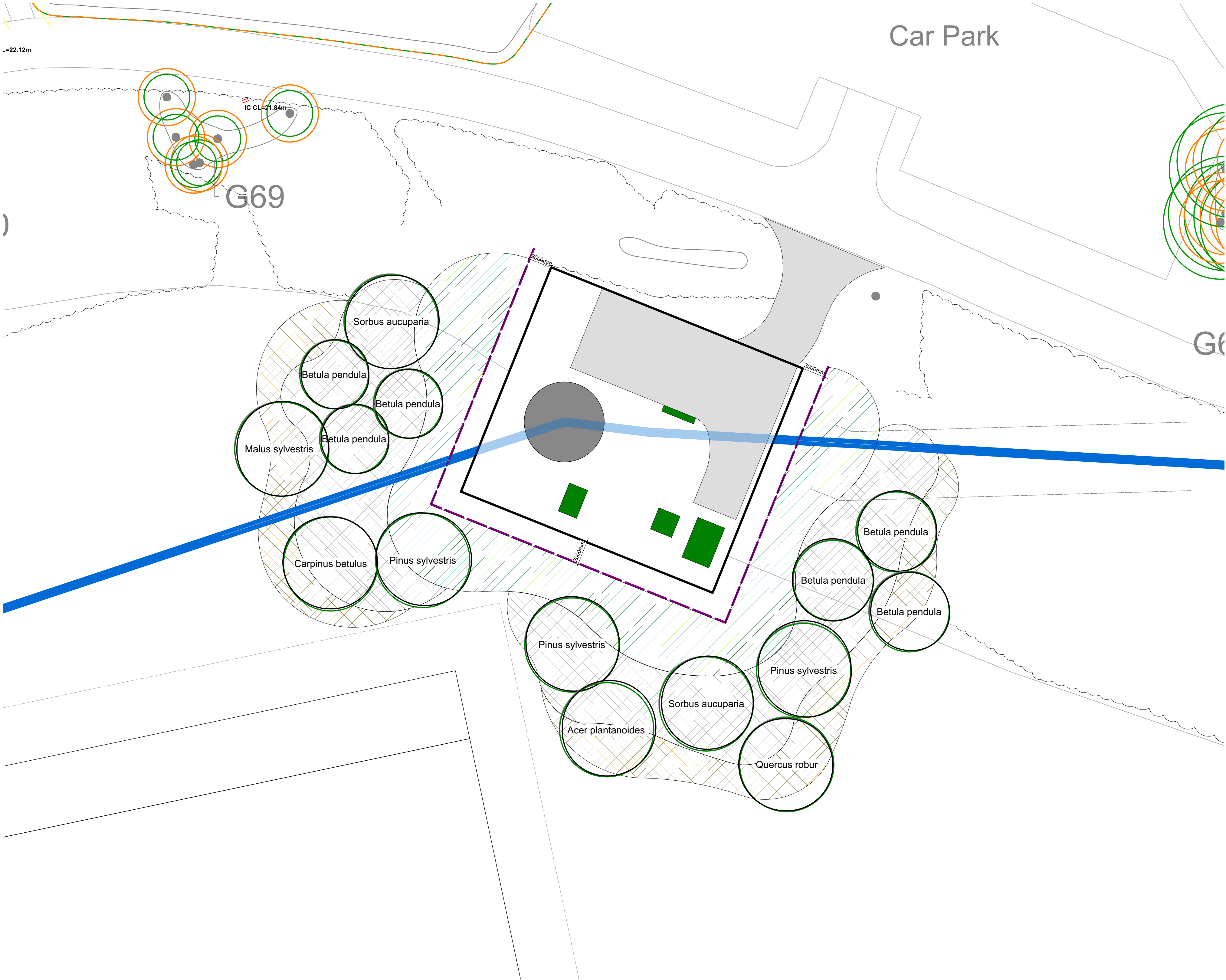
- 4.1 All amenity grass areas shall be topsoiled to a depth of 150mm.  
4.2 Areas of grass/species rich seeding shall be cultivated to a minimum depth of 150mm prior to grass seeding and all stones in excess of 25 mm removed. The surface shall be raked to smooth flowing contours and fine tilth. Lawn areas shall receive pre-seeding fertiliser (Agrosil LR or similar approved) to manufacturers recommendations.  
4.3 Seed mix to wildflower areas shall be mix WFG15 by Germinal GB Ltd or similar approved. Sow at 5 g/sq m.  
4.4 Reinstatement of amenity grass. Use Rowlawm medallion seed mix, sown into a cultivated topsoil of 100mm and fine tilth (NB as per manufacturers recommendations).  
4.5 Woodland seed mix for edge of woodland and understory planting to be sown on cultivated top soil of 100mm and fine tilth at 5g/sqm.

5.0 Implementation

- 5.1 Shrub planting to take place between late October to late March.  
5.2 Grass sowing to be carried out between April/May to August/September.  
5.3 Wildflower and woodland grass sowing to be carried out between March/May to August/October.  
5.4 The implementation of the proposed planting will be monitored by the Landscape Architect ensuring compliance of the planting with the relevant planting plans and specification and issue a report to both the landscape contractor and LPA with any items that require replacement / rectification.

6.0 Maintenance

- 6.1 All planted areas shall be subject to a maintenance programme, which will include the replacement of failed plants at the time of practical completion and within the next available planting season.  
6.2 The programme of maintenance operations will be detailed in the Landscape Management and Maintenance Plan.



KEY

**Proposed Underground utilities**  
Refer to Engineers drawing B13194-102503-01-BG-DR-CA-C16028 for details.

**Root Barrier**  
To path to prevent overgrowing of adjacent planting

**Wildflower Mix**  
Emorsgate EM2 Standard General Purpose Meadow Mixture or accepted equivalent

Emorsgate EM3 Special General Purpose Meadow Mixture or accepted equivalent

**Native Shrub Mix**

Indicative species

*Euonymus europaeus*  
*Ligustrum vulgare*  
*Cornus sanguinea* 'Midwinter Fire'  
*Ilex 'Golden King'*  
*Ilex aquifolium*  
*Prunus spinosa*  
*Lonicera periclymenum*  
*Corylus avellana*

**Woodland Edge and Understorey Planting Mix**

Boston Seeds Understorey and Woodland Edge Heavy Shade Wildflower Seed mix (BS8M). Planted at 5g/sqm.

Existing brambles

Proposed Tree

REVISIONS:

No.	Date	By	Revision Notes
P02	04/05/2022	JM	Removed red line boundary and additional spec added
P03	07/07/2022	JF	Layout changes
P04	26/07/2022	JM	Landscape amendments

NOTES:

NOT FOR SITE PURPOSES: This drawing is a general arrangement plan only and is not intended for site purposes.

SCALE: Do not scale from this drawing.

SETTING OUT: All setting out, levels, dimensions to be agreed on site. Do not use the information on this drawing without checking all dimensions on site. Any discrepancies between drawings, specifications and site works are to be reported to The Urbanists. Order of construction and setting out is to be agreed on site.

CHECK: This drawing must be the latest revision, read in conjunction with all other drawings, details, specifications and schedules. All dimensions are in millimetres unless otherwise stated. Where and contradiction or uncertainty arises between the drawings and/or the schedule of works, it is the contractor's responsibility to seek verification from The Urbanists before proceeding. No claims will be met by The Urbanists, where the contractor continues work in absence of such confirmation.

PURPOSE OF ISSUE:

CO-ORDINATION



Client

Arup

Project

Halley Park

Title

Plasdwr - Halley Park, Cardiff

Project Code UG1969 URB XX ZZ DR L 90 0004 P05 S1

Drawn: JM Date: 29/07/22 Checked: GC Scale: 1:200@A1

The Urbanists - The Creative Quarter - 8A Morgan Arcade - Cardiff - CF10 1AF  
T: 029 2023 6133 E: info@theurbanists.net W: www.theurbanists.net  
© This drawing is copyright and may not be reproduced in whole or part without written authority.

Plant Schedule				
Tree	Quantity	Latin Name	Scheduled Size	Density
	6	<i>Betula pendula</i>	EHS.3x. 200cm clear stem. 35-400cm ht. CG or RB.	Counted
	1	<i>Carpinus betulus</i>	EHS.3x. 200cm clear stem. 35-400cm ht. CG or RB.	Counted
	2	<i>Malus sylvestris</i>	EHS.3x. 200cm clear stem. 35-400cm ht. CG or RB.	Counted
	1	<i>Pinus sylvestris</i>	EHS.3x. 200cm clear stem. 35-400cm ht. CG or RB.	Counted
	3	<i>Quercus robur</i>	EHS.3x. 200cm clear stem. 35-400cm ht. CG or RB.	Counted
	2	<i>Sorbus aucuparia</i>	EHS.3x. 200cm clear stem. 35-400cm ht. CG or RB.	Counted
	0			Counted
	1	<i>Acer plantanoides</i>	EHS.3x. 200cm clear stem. 35-400cm ht. CG or RB.	Counted