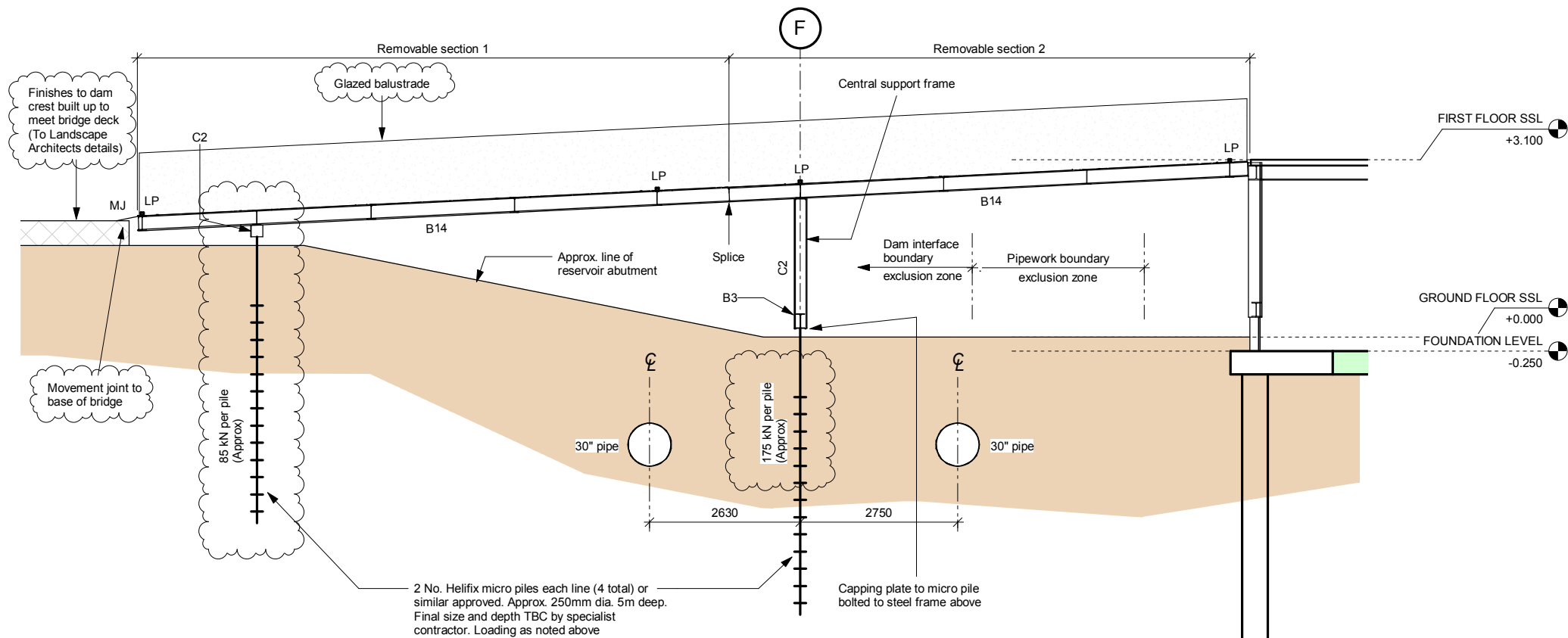
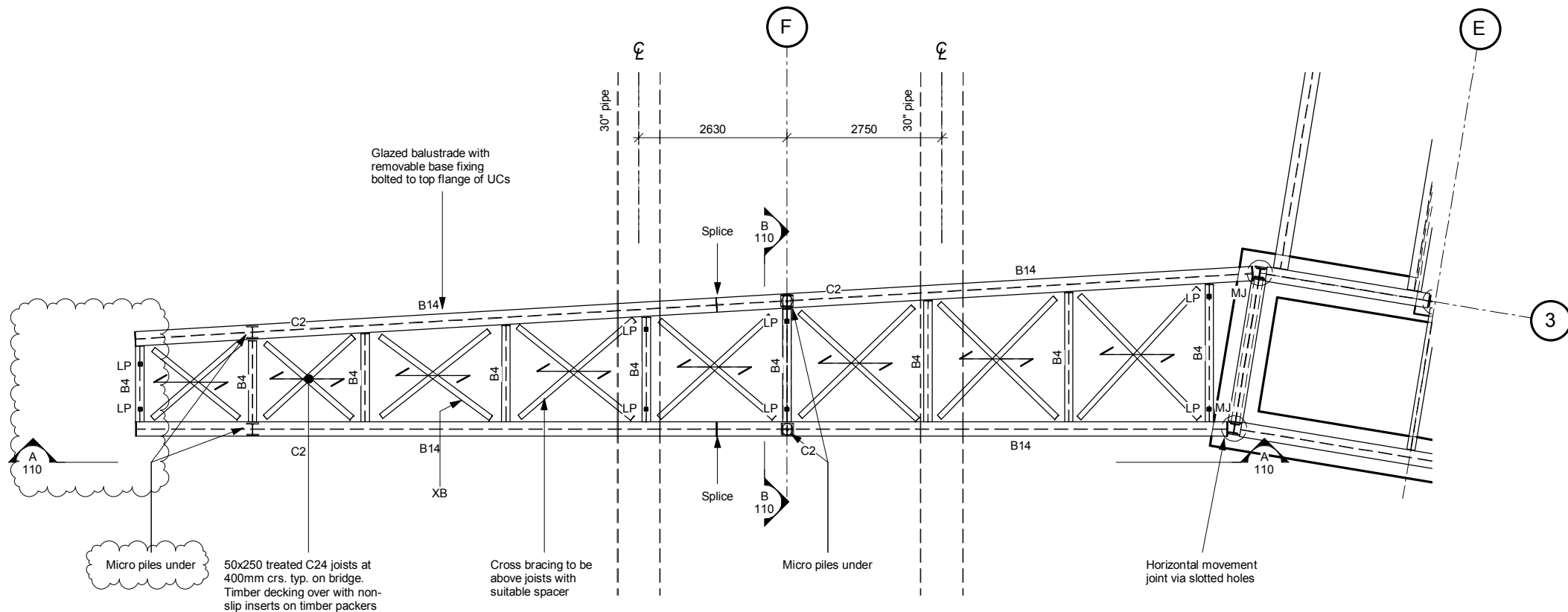


General notes:

- All bridge steelwork to be galvanized
- 'LP' indicates lifting points. For removal of bridge if services access is required

Bridge notes:

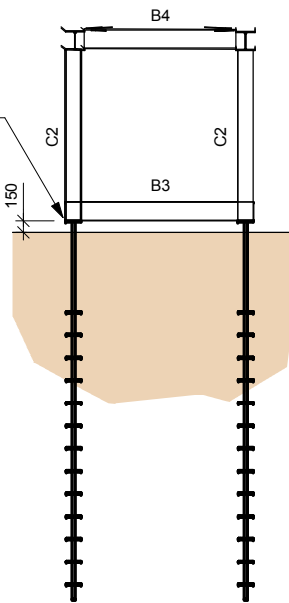
- Bridge can be dismantled if required for access to services below.
- The bridge superstructure is made up of three removable sections; 2 deck sections, and 1 central support frame.
- The central support frame is founded on removable helical piles.
- Helical piles have a number of benefits including:
  - a. Minimal vibration
  - b. Minimal disruption / noise
  - c. No spoil removal
  - d. Can be easily extracted if required
  - e. Ground is returned to original state on removal without environmental issues



Column Schedule		
Ref.	Size	Grade
C1	UC152x152x37	S355
C2	UC203x203x71	S355
C3	UC254x254x89	S355
C4	CHS244.5x12.5	S355
C5	SHS100x100x10	S355

Beam Schedule		
Ref.	Size	Grade
B1	UB203x133x30	S355
B2	UB254x146x31	S355
B3	UB254x146x37	S355
B4	UB254x146x43	S355
B5	UB356x171x51	S355
B6	UB406x140x39	S355
B7	UB406x140x46	S355
B8	UB457x152x60	S355
B9	UB457x191x67	S355
B10	UB457x191x82	S355
B11	UB457x191x98	S355
B12	UC152x152x30	S355
B13	UC254x254x73	S355
B14	UC254x254x89	S355
B15	SHS120x120x8	S355

Bracing Schedule		
Ref.	Size	Grade
XB	100wd x 10thk Plate	S355



GA Bridge Long Section  
1 : 100

GA Bridge Cross Section  
1 : 100

This drawing has been prepared for the sole benefit of the client named below. The liability of Momentum, its directors and employees in respect to this information will not extend to any other project.

This drawing shall not be reproduced in any form without prior permission being granted.

This drawing is to be read in conjunction with all other relevant contract documents and other consultants information.

Do not scale from this drawing. Responsibility is not accepted for errors made by others when scaling from this drawing.

The dimensional accuracy of the digital data contained within this drawing may not be a true representation of the actual dimensional setting out. Responsibility is not accepted for errors made by others when using digital data from this drawing.

Work only to figured dimensions.

Unless indicated otherwise all levels are in metres and all dimensions are in millimetres. All levels and dimensions should be checked on site by the persons carrying out the work and any discrepancies notified to Momentum before proceeding with relevant works.

Where information on this drawing is not clear please contact us.

NOT FOR CONSTRUCTION

3	20.03.19	JP
2	12.02.19	JP
1	30.01.19	JP
0	11.01.19	JP
Rev	Date	By

Work Stage - ACE / (RIBA)  
Stage 3  
Reason For Issue  
FOR INFORMATION  
Project Title  
Lisvane Reservoir

Client  
Architect  
Feilden Clegg Bradley  
Drawing Title  
Bridge GA Plan

Scale at A3 Drawn Checked  
1 : 100 J.Pugh JG

MOMENTUM  
structural engineers

90 Walcot Street | 103 The Timber Yard  
Bath BA1 5BG | London N1 6ND  
01225 444194 | 020 7739 6939  
www.momentumengineering.com

Drawing Reference  
3710 110 3