

Water Efficiency Maths — Garden



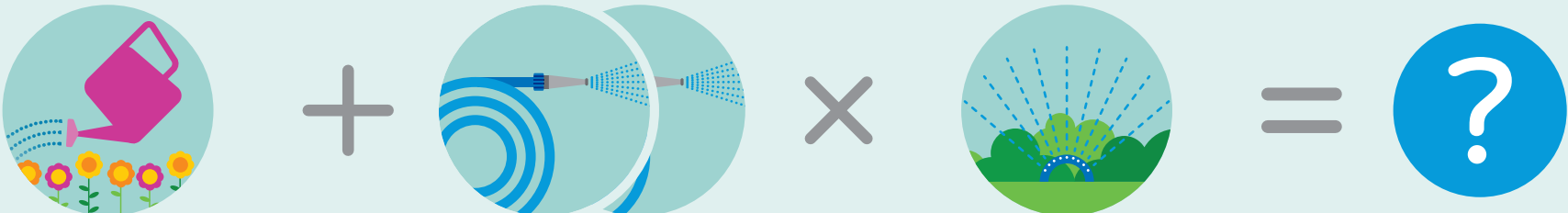
$3 \times \text{Hose watering lawn} = 27 \text{ litres}$



$\text{Hose watering lawn} + \text{Sprinkler watering lawn} + \text{Hose watering lawn} = 118 \text{ litres}$

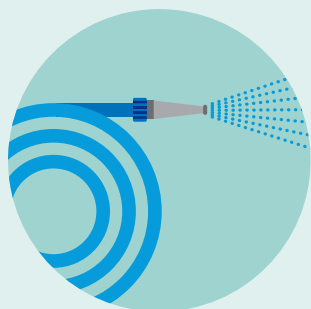


$2 \times \text{Watering can watering flowers} + \text{Sprinkler watering lawn} = 120 \text{ litres}$



$\text{Watering can watering flowers} + \text{Hose watering lawn} \times \text{Sprinkler watering lawn} = ?$

Water Efficiency Maths — Garden



Hose Pipe

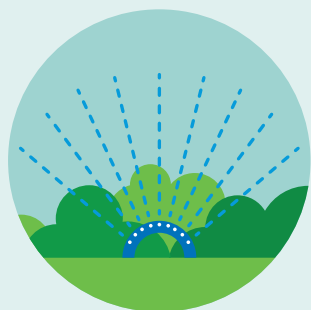
Watering your garden with a hosepipe uses around 9 litres of water per minute. You would probably spend a minimum of 10 minutes watering the garden which would result in the use of 90 litres of water.



Water Butt

Using water from a water butt is the most water efficient way to water your garden.

Water butts collect and store rainwater so no energy has been used to collect/clean it.



Sprinkler

A garden sprinkler uses around 500-1000 litres of water per hour!



Watering Can

A watering can holds an average of 10 litres. This is a much more efficient use of water.

Water Efficiency Maths — Garden



Answer

$$9 + 9 + 9 = 27$$

$$9 + 100 + 9 = 180$$

$$10 + 10 + 100 = 120$$

$$10 + 18 \times 100 = 2800$$