

Water Efficiency Maths — Bathroom

$$\text{Toilet flush} + \text{Toilet flush} + \text{Toilet flush} = 18 \text{ litres}$$

$$\text{Toilet flush} + \text{Glass of water} + \text{Toilet flush} = 12.5 \text{ litres}$$

$$\text{Shower (2 min)} + \text{Shower (2 min)} + \text{Glass of water} = 56.5 \text{ litres}$$

$$\text{Shower (2 min)} + \text{Glass of water} - \text{Toilet flush} = ?$$

Water Efficiency Maths — Bathroom



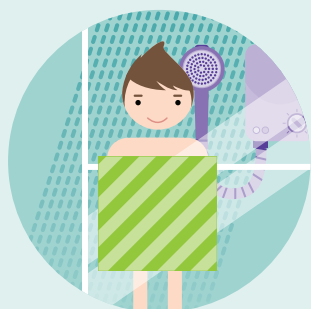
Toilet with a HIPPO bag

Using a HIPPO bag can save 3 litres of water every time you flush your toilet.



Using a cup to rinse when cleaning your teeth

Filling a cup with water to rinse your toothbrush instead of leaving the tap running could save 17.5 litres of water.



4 Minute Shower

Taking a 4 minute shower (not a power shower) instead of a bath can save a whopping 52 litres of water! A 5 minute power shower can use the same amount of water as a bath – 80 litres.

Water Efficiency Maths — Bathroom



Answer

$$6 + 6 + 6 = 18$$

$$6 + 0.5 + 6 = 12.5$$

$$28 + 28 + 0.5 = 56.5$$

$$56 + 0.5 - 12 = 44.5$$