

The Brecon Beacons

A Mega Catchment for Everyone

The Brecon Beacons supply almost half of the drinking water we provide to our customers every day, so you could call it a Mega Catchment for water.

But it's not just water that makes our Beacons extraordinary. Communities, biodiversity, agriculture, forestry and tourism all play a part in making it such an iconic landscape that provides so much for so many.

We've come up with an idea which will help the Brecon Beacons continue to thrive and build resilience for future generations - we want to turn it into a Mega Catchment for everyone.

Put simply, we want to recognise how much this area provides for us at a landscape scale rather than working on single issue projects within boundaries nature doesn't recognise.

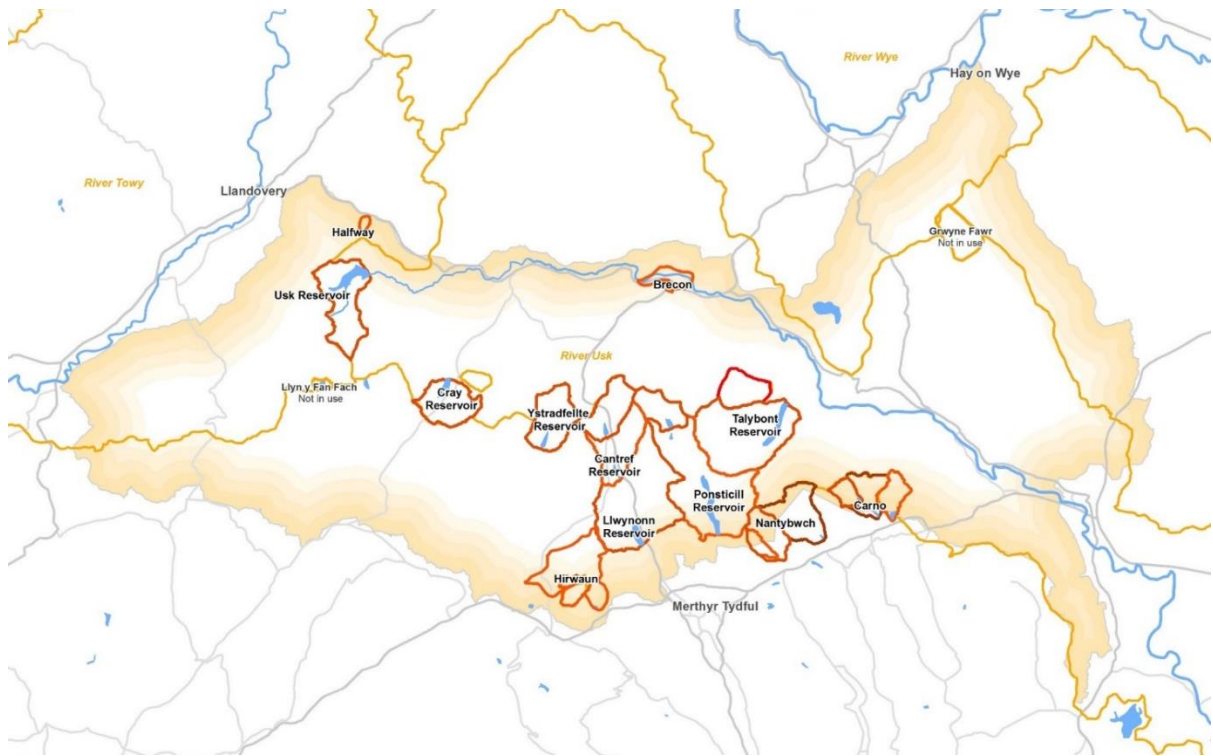
We want to work with stakeholders to co-create a common vision which will deliver the best possible outcomes for everyone who lives, works and benefits from the Brecon Beacons.

By sharing ideas, knowledge and enthusiasm, we will deliver so much more for the environmental, social, cultural and economic well-being of a sustainable Wales.

So what do you think? Are you in?



Drinking Water Catchments in the Brecon Beacons



The Brecon Beacons Mega Catchment

